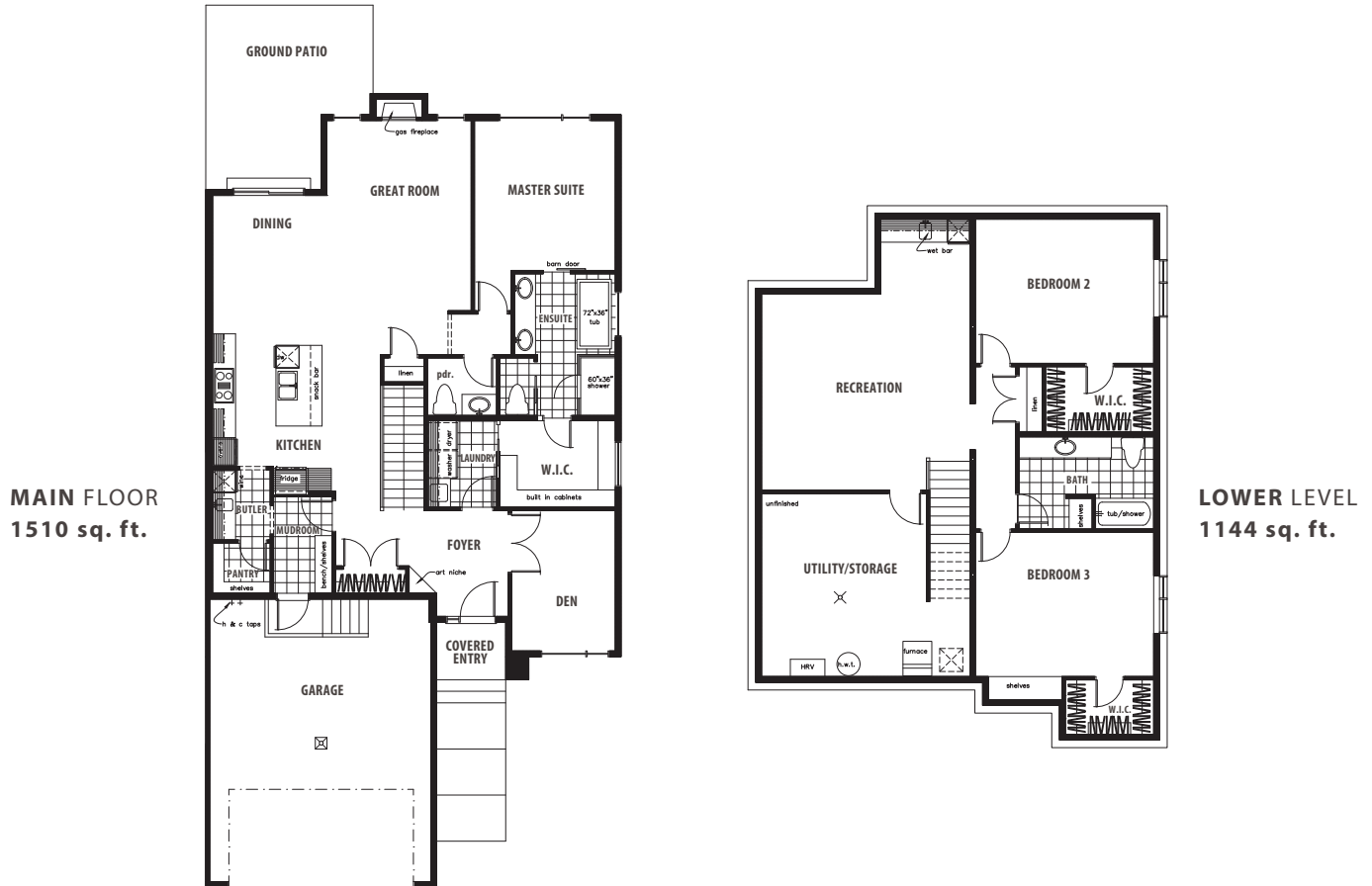




The
OPHELIA
4605 Knight Point SW

The
OPHELIA
4605 Knight Point SW



[THE FACTS]

- 1510 Sq. Ft.
- 1 bedroom + den
- 1.5 bathrooms

HOME FEATURES/OPTIONS

- 6" CMU party wall c/w air gap both sides complete with Roxul insulation for superior sound and fire barrier system
- Double car garage c/w floor drain and ceiling height for future car lift
- Exposed aggregate steps, sidewalk, driveway and rear patio
- EIFS air barrier acrylic stucco system c/w additional stone and Longboard Siding details
- Black exterior windows
- 10' main floor c/w 8' doors
- Custom built ins for mud room
- Butlers pantry c/w prep sink and beverage center
- Maple stained rail c/w iron spindles
- Linear gas fireplace c/w tile detail
- Kitchenaid appliance package
- Custom walk in closet with walk through access to laundry room
- Ensuite c/w freestanding tub and shower c/w tiled walls and 10mm glass
- Developed basement with wet bar