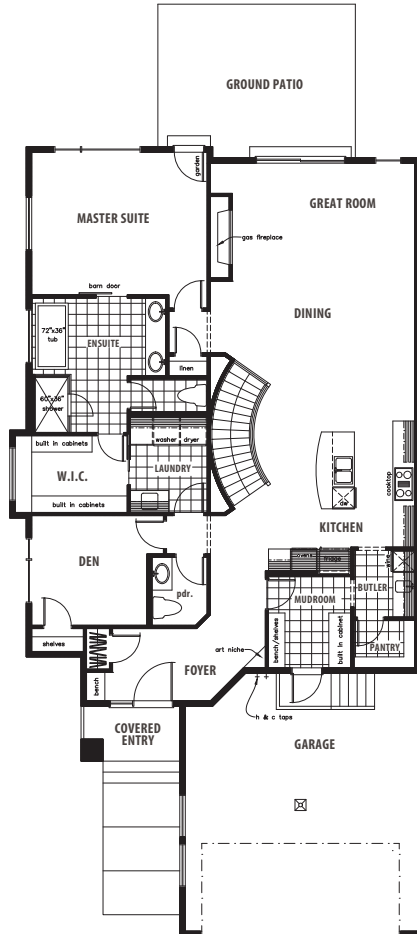




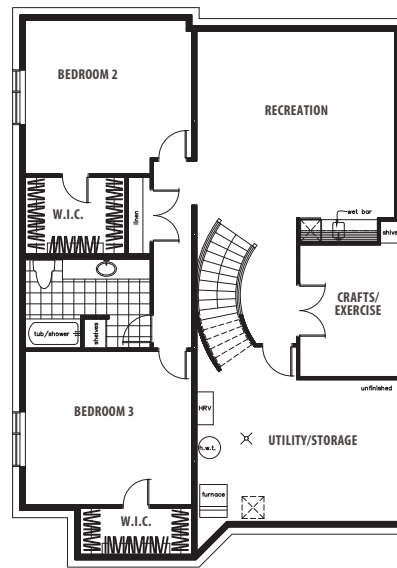
The
DAPHNE
4603 Knight Point SW

The
DAPHNE
4603 Knight Point SW

MAIN FLOOR
1754 sq. ft.



LOWER LEVEL
1358 sq. ft.



[THE FACTS]

HOME FEATURES/OPTIONS

- 1754 Sq. Ft.
- 1 bedroom + den
- 1.5 bathrooms
- 6" CMU party wall c/w air gap both sides complete with Roxul insulation for superior sound and fire barrier system
- Double car garage with hydronic heating, floor drain and ceiling height for future car lift - complete with painted skirting to polyaspartic floor coating
- EIFS air barrier acrylic stucco system c/w additional stone and Longboard Siding details
- Exposed aggregate steps, sidewalk, driveway and rear patio
- Black exterior windows
- 10' main floor c/w 8' doors
- Custom built ins throughout house
- Butlers pantry c/w prep sink and beverage center
- Curved stair c/w maple stained stringers and rail complete with iron spindles
- Linear gas fireplace c/w floating quartz hearth, maple stained shelves and mantel completed with full height stone detail
- Wolf/Subzero appliance package