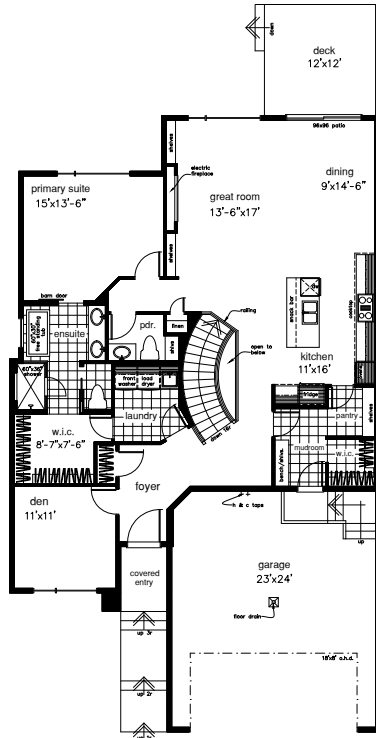




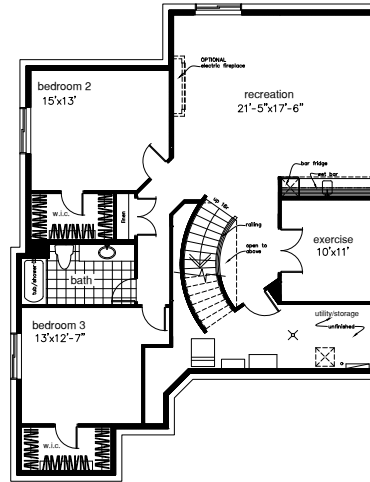
The
ELEANOR IV
4615 KNIGHT POINT SW

The Eleanor

The
ELEANOR IV
 4615 KNIGHT POINT SW



MAIN FLOOR
1669 sq. ft.



LOWER LEVEL
1365 sq. ft.

[THE FACTS]

HOME FEATURES/OPTIONS

- 1669 Sq. Ft.
- 1 bedroom + den
- 1.5 bathrooms

- 6" solid concrete party wall c/w air gap both sides complete with Roxul insulation for superior sound and fire barrier system
- Double car garage c/w floor drain and ceiling height for future car lift
- Exposed aggregate steps, sidewalk, driveway
- Deck c/w waterproof vinyl
- EIFS air barrier acrylic stucco system c/w additional stone and faux wood siding details
- Black exterior windows
- 10' main floor c/w 8' doors
- Upgraded black plumbing fixtures
- Custom built ins for mudroom c/w stained hickory accents
- Stained hickory stair stringers and slimline railing c/w iron spindles
- Linear electric fireplace c/w stained hickory millwork and tile detail
- Panel ready built in fridge with Bosch appliance package