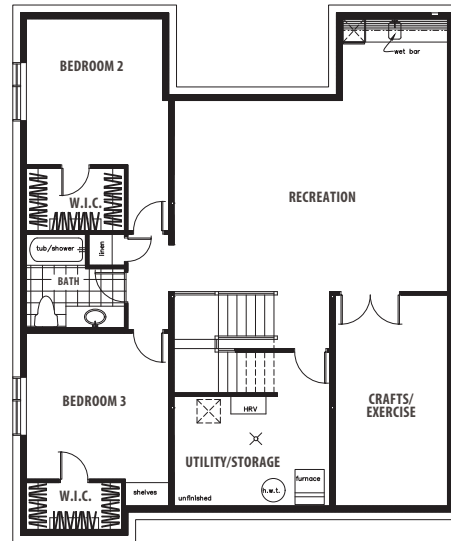
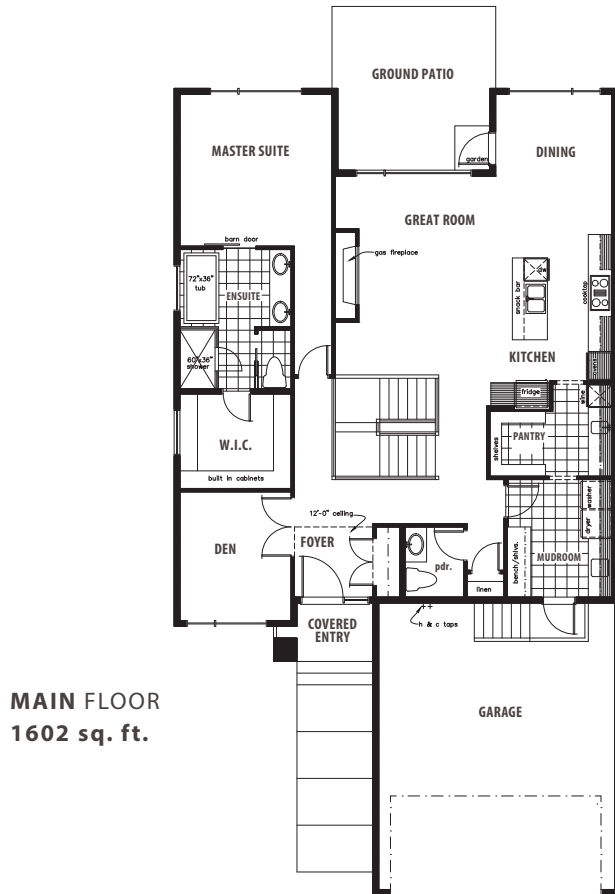




*The*  
**NIKITA**  
4610 Knight Point SW

*The*  
**NIKITA**  
4610 Knight Point SW



**[THE FACTS]**

**HOME FEATURES/OPTIONS**

- 1602 Sq. Ft.
- 1 bedroom + den
- 1.5 bathrooms
- 6" CMU party wall c/w air gap both sides complete with Roxul insulation for superior sound and fire barrier system
- Double car garage c/w floor drain and ceiling height for future car lift
- Exposed aggregate steps, sidewalk, driveway and rear patio
- EIFS air barrier acrylic stucco system c/w additional stone and Longboard Siding details
- Black exterior windows
- 10' main floor c/w 8' doors
- Custom built ins for mud room
- Butlers pantry c/w prep sink and beverage center
- Open rise stairs with stained oak stringers and 2x6 rail complete with glass inserts
- Linear gas fireplace c/w tile detail
- Kitchenaid appliance package
- Custom walk in closet
- Zero threshold custom tiled shower and freestanding tub
- Developed basement with wet bar