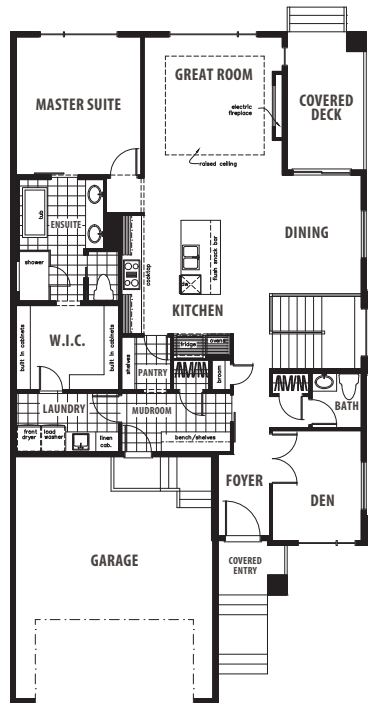




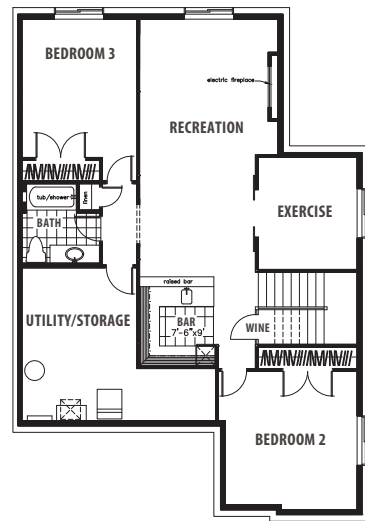
*The*  
**CORA**

*Aacropolis*

# The CORA



**MAIN FLOOR**  
1574 sq. ft.



**LOWER LEVEL**  
1227 sq. ft.

## [THE FACTS]

- 1574 Sq. Ft.
- 1 bedroom + den
- 1.5 bathrooms

## HOME FEATURES/OPTIONS

- Double car garage c/w floor drain and ceiling height for future car lift
- Exposed aggregate steps, sidewalk and driveway
- Landscaping including fencing
- EIFS air barrier acrylic stucco system c/w additional stone and faux wood siding details
- Black exterior windows
- 10' main floor c/w 8' doors
- Custom built ins for mud room
- Great room raised ceiling detail
- Walnut stair stringers and walnut railing c/w horizontal spindles
- Napoleon electric fireplace with walnut and stone details
- Appliance package
- Custom walk in closet with walk through access to laundry room
- Zero threshold custom tiled shower and freestanding tub
- Navien tankless hot water system
- Basement development including wet bar and wine storage room