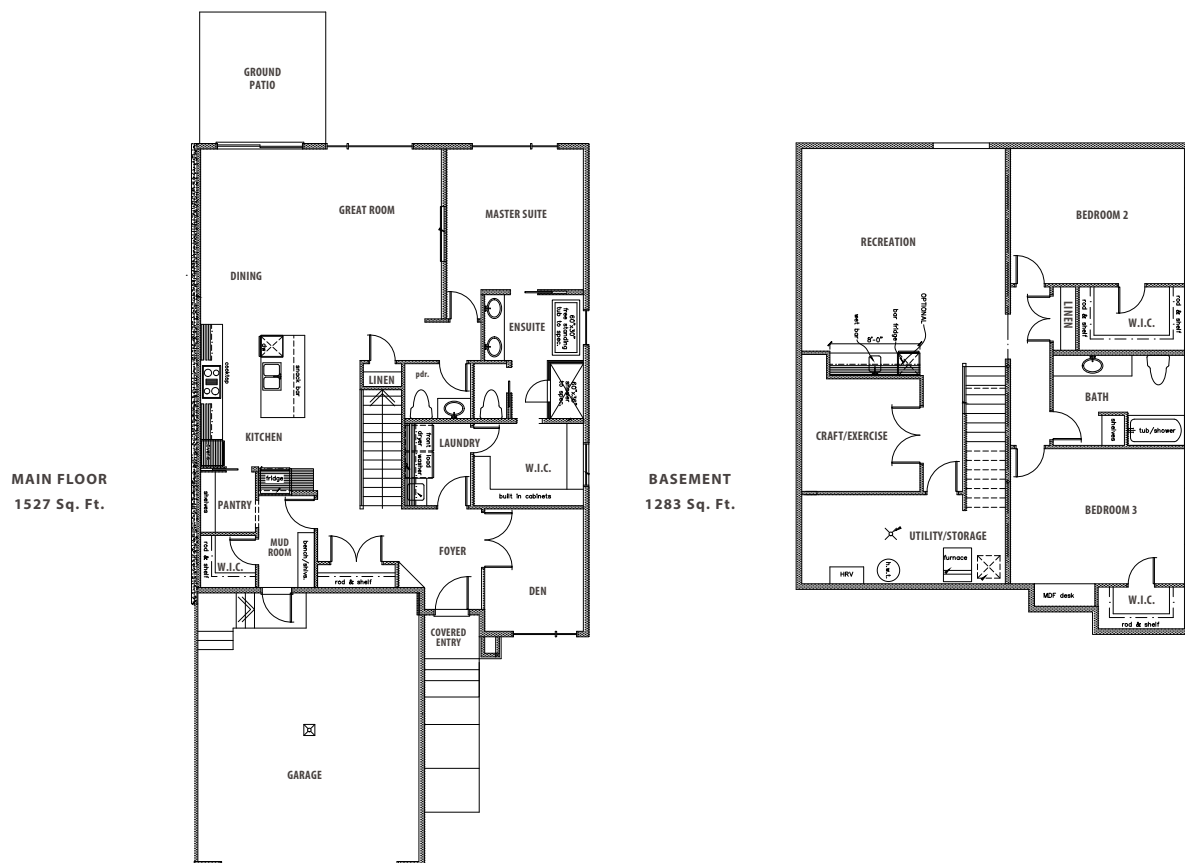




The
ELEANOR II
4609 KNIGHT POINT SW

The
ELEANOR II
 4609 KNIGHT POINT SW



[THE FACTS]

HOME FEATURES/OPTIONS

- 1527 Sq. Ft.
- 3 bedrooms
- 2.5 bathrooms
- 6" solid concrete party wall c/w air gap both sides complete with Roxul insulation for superior sound and fire barrier system
- Double car garage c/w floor drain and ceiling height for future car lift
- Exposed aggregate steps, sidewalk, driveway and rear patio
- EIFS air barrier acrylic stucco system c/w additional stone and faux wood siding details
- Black exterior windows
- 10' main floor c/w 8' doors
- Custom built ins for mud room
- Maple stained rails c/w iron spindles
- Linear electrical fireplace c/w tile detail
- Choice of appliance package
- Custom walk in closet with walk through access to laundry room
- Ensuite c/w freestanding tub and zero threshold tiled shower and 10mm glass
- Navien tankless water heater